



#BeAuthentic and
#LiveTheDream
1 John 3:1-10

Notes

Scripture References:

- 1 John 3:1-10
- Ephesians 2:10
- Isaiah 64:8
- Galatians 5:16-25
- Colossians 1:15-23

Going Deeper:

1. Who really defines who/what we are? What is that definition?
2. Will we have all our dreams answered if we just have enough faith?



Grace Mennonite Church

1350 Pembina Ave | 204-325-8884

office@gracechurchwinkler.com | www.gracechurchwinkler.com



@gracechurchwinkler



/gracechurchwinkler

Office Hours: Monday: closed | Tuesday to Friday: 9 am - 3 pm

June 8, 2025



#BeAuthentic and
#LiveTheDream
1 John 3:1-10

Speaker: Pastor Sean Harder

Worship Team: Bonnie Klassen

Love God • Love Others • Make Disciples!



Welcome!

We're glad you've come to worship with us.

New Here?



- ♦ We'd love to get to know you. Scan the code to connect to our contact page.
- ♦ Please send us a picture of you and your family to help our staff recognize and connect with you.
- ♦ Have questions? Check our website for FAQ's or contact the office for more information.

Parents with Small Children

Parents with small children are welcome to use the nursery. Please tidy up after your children.

Nursing moms: The room behind the nursery is set up as a quiet room. Service will be streamed to the TV so you won't miss anything.

Families with older children: the Fellowship Hall and the Genesis Room are open and live streaming is available. The Pre-School classroom is also available.

Giving

At Grace we have several options for those wishing to make a donation:

- ♦ Cash/Cheque: offering basket or office drop box
- ♦ Direct Deposit: donations can be made through the credit union as a bill payment. Contact office for account number
- ♦ PayPal: link can be found on our website giving page
- ♦ E-Transfer: e-transfer to office@gracechurchwinkler.com

This Week at GRACE

Thursday

9:00 am Ladies Breakfast at Buttercup Café.

Friday-Sunday

Annual Church Weekend at Plum Coulee Campground

See insert for schedule of events and map

Coming Events

Coffee at the Curb

- What - Coffee, snacks and fellowship at the north side of our parking lot (by our street sign)
- Who - Everyone is welcome
- When - Every Sunday, starting June 22nd until Sept 7th
- 9:30 - 10:30 am

Serviette Lunches

- What - Potluck lunch that can be eaten on a serviette
 - Bring finger food to share. Example: sandwiches, fresh veggies, cookies, etc.
- Who - Everyone is welcome
- When - Every Sunday, starting June 22nd until Sept 7th
- following the morning service

Staff Update

Wendy will be out of the office this week. If you call the office, leave a message and someone will get back to as soon as they can. She's back in the office on Monday, June 16.





Schedule of Events:

- | | |
|--------------------|--|
| Friday Evening | - Bonfire |
| Saturday Afternoon | - Lawn games & fun at the beach |
| Saturday Evening | - Weiner roast supper (bring your own meat & buns, and sides to share) |
| | - Baseball |
| | - Bonfire |
| | - Outdoor movie for the kids |
| Sunday Morning | - 10:45 am - Worship Service |
| | - Baptism at the beach after service |
| | - Lunch (pizza) |
| Sunday Afternoon | - 1-3 pm - Games & Activities for all ages |

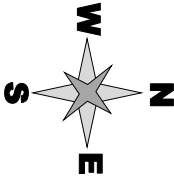
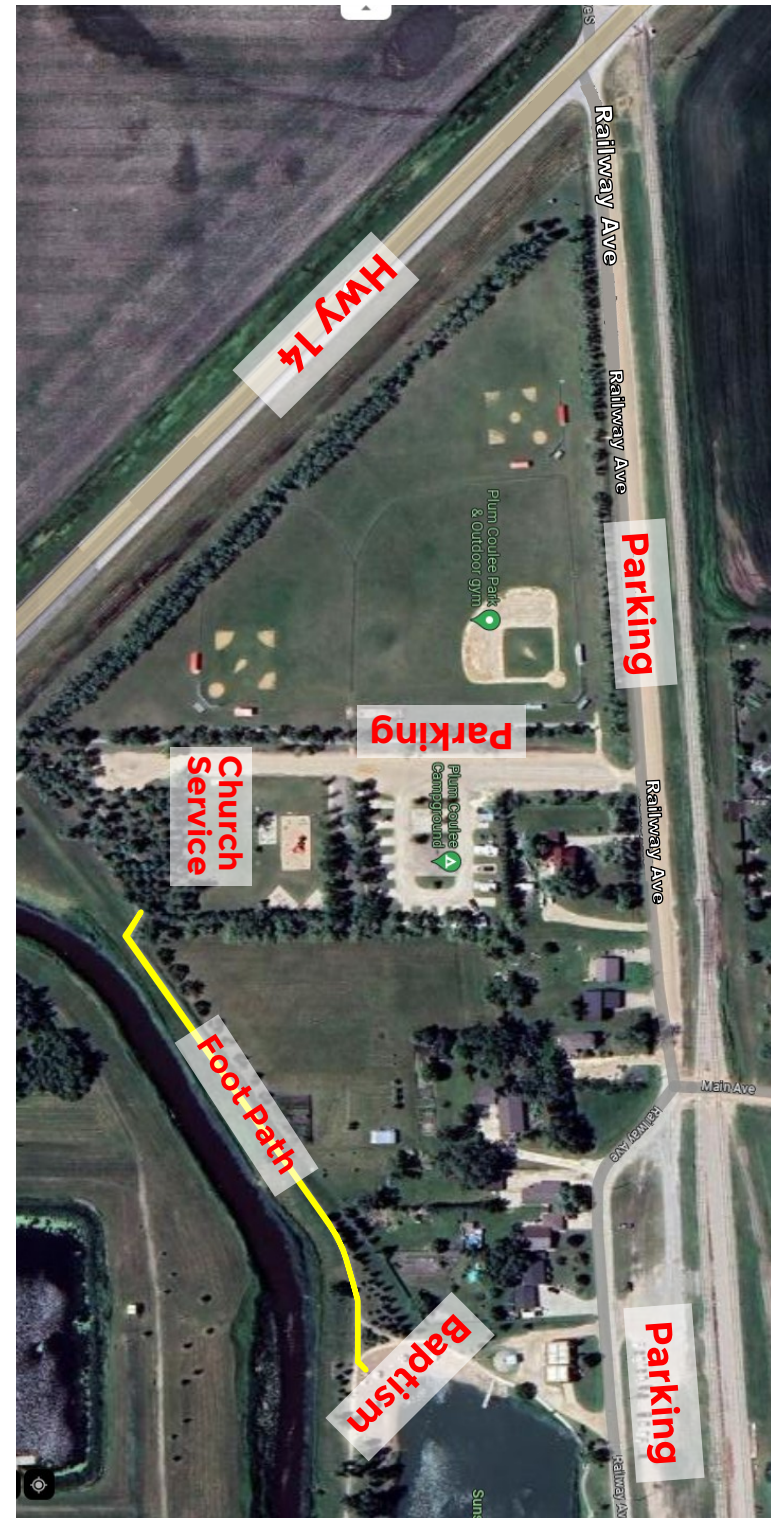
What to bring:

- Lawn chairs
- Snacks to share (Friday & Saturday)
- Lawn games & gloves

We'll provide:

- Beverages
- Plates/utensils/napkins
- Condiments
- Sunday lunch (donations will be accepted)

* See map on back



Map of Plum Coulee Campground Area
Parking along roads and at the beach